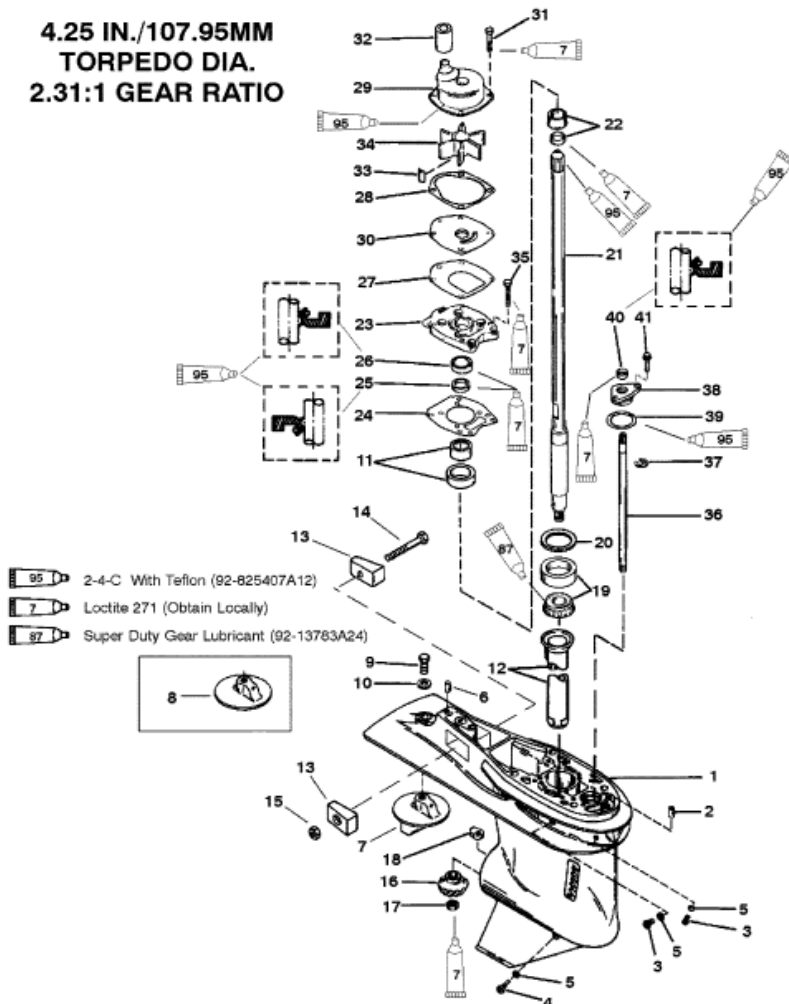


(SEE NOTE ON G/H CHART BEFORE ORDERING FROM THIS PAGE)

**4.25 IN./107.95MM
 TORPEDO DIA.
 2.31:1 GEAR RATIO**



		Parts List				
Ref	Class	Part	Description	Qty	Comment	Footnote
1	1667	9011A73	GEAR HOUSING	1	(BLACK) BASIC	
1	1667	9011A74	GEAR HOUSING	1	(GRAY) BASIC	
1	1667	9011A80	GEAR HOUSING	1	(TRACKER-GRAPHITE GRAY) B&	
2	17	43043	DOWEL PIN (FRONT)	1		
3	10	79953A 2	DRAIN SCREW	2		
4	22	67892A 1	SCREW (MAGNETIC)	1		
5	12	19183	WASHER-SEALING	3		4,8,9
6	17	43044	DOWEL PIN (REAR)	1		
7		31640 4	TRIM TAB	1	(USE W/GH W/O ANODES)	
8		31640 5	TRIM TAB	1	(USE W/GH WITH ANODES)	
9	10	825427	SCREW (7/16-14 X 1-1/4)	1		
10	12	45176	WASHER	1		
11		43040A 1	CARRIER	1		
12		43046	OILER TUBE	1		
13		826134	ANODE	2	DESIGN II	
14	10	40003 33	SCREW	1	DESIGN II	
15	11	826833 6	NUT	1	DESIGN II	
16	43	44484	PINION GEAR (13 TEETH)	1		
17	11	35921	NUT	1		
18		76039	SHIFT CAM	1		
19	31	42677A 1	TAPERED ROLLER BEARING	1		
20	15	44492A 1	SHIM ASSEMBLY	1		
21	45	43031A 1	DRIVE SHAFT ASSEMBLY	1	(LONG-32 IN.)	
21	45	43032A 6	DRIVE SHAFT ASSEMBLY	1	(LL-34-1/2 IN.)	
21	45	43032A 4	DRIVE SHAFT ASSEMBLY	1	(X-LONG-37 IN.)	
22		42461A 1	WEAR SLEEVE ASSEMBLY	1		
23		43055A 4	COVER ASSEMBLY	1		8
24	27	43047 2	GASKET	1		4,8,9
25	26	43036	OIL SEAL (LOWER)	1		8,9
26	26	43035	OIL SEAL (UPPER)	1		8,9
27	27	43033 1	GASKET	1		4,8,9
28	27	817277	GASKET	1		4,8,9
29		817275A 2	WATER PUMP ASSEMBLY	1		8
30		817276	FACE PLATE	1		8
31	10	824832 7	SCREW (M6 X 30)	4		8
32		43023 2	SEAL	1		8,9
33	28	43037	KEY	1		8
34	47	43026 2	IMPELLER	1		8
35	10	824832 6	SCREW (M6 X 25)	6		
36		43048A 1	SHIFT SHAFT ASSEMBLY	1	(LONG-12 IN.)	
36		43048 2	SHIFT SHAFT ASSEMBLY	1	(LL-14-1/2 IN.)	